



The Royal Society of Medicine

# Reciprocal clubs around the world

For RSM Members

In addition to the Members' only facilities in London, RSM members also have access to over 50 reciprocal clubs around the world.

Located in five different continents, why not take advantage of these clubs on your next holiday or business trip?

All that is required is a letter of introduction from the Royal Society of Medicine.

## North America

**Century Club of Syracuse  
New York State, USA**  
[www.centuryclubofsyracuse.com](http://www.centuryclubofsyracuse.com)  
Tel: +1 315 422 6161  
[info@centuryclubofsyracuse.com](mailto:info@centuryclubofsyracuse.com)

**Cornell Club  
New York City, USA**  
[www.cornellclubnyc.com](http://www.cornellclubnyc.com)  
Tel: +1 212 986 0300  
[frontdesk@cornellclubnyc.com](mailto:frontdesk@cornellclubnyc.com)

**Harvard Club of  
New York City, USA**  
[www.hcnyc.com](http://www.hcnyc.com)  
Tel: +1 212 840 6600  
[info@hcnyc.com](mailto:info@hcnyc.com)

**The Yale Club  
of New York City  
New York City, USA**  
[www.yaleclubnyc.org](http://www.yaleclubnyc.org)  
Tel: +1 212 716 2100  
[GuestRooms@yaleclubnyc.org](mailto:GuestRooms@yaleclubnyc.org)

**Rideau Club  
Ottawa, Canada**  
[www.rideauclub.ca](http://www.rideauclub.ca)  
Tel: +1 613 233 7787  
[lamsr@rideauclub.ca](mailto:lamsr@rideauclub.ca)

**Terminal City Club  
Vancouver, Canada**  
[www.tcclub.com](http://www.tcclub.com)  
Tel: +1 604 681 4121  
[members@tcclub.com](mailto:members@tcclub.com)

**The National Club  
Toronto, Canada**  
[www.thenationalclub.com](http://www.thenationalclub.com)  
Tel: +1 416 364 3247  
[info@thenationalclub.com](mailto:info@thenationalclub.com)

**Centro Libanes ac Club  
Mexico City, Mexico**  
[www.centrolibanes.org.mx](http://www.centrolibanes.org.mx)  
Tel: +52 5668 6068  
[residencia@centrolibanes.org.mx](mailto:residencia@centrolibanes.org.mx)



## Europe

**The Athenaeum  
Liverpool, England**  
[www.theathenaeum.org.uk](http://www.theathenaeum.org.uk)  
Tel: +44 0 151 709 7770  
[reception@theathenaeum.org.uk](mailto:reception@theathenaeum.org.uk)

**The Bath  
and County Club  
Bath, England**  
[www.bathandcountyclub.com](http://www.bathandcountyclub.com)  
Tel: +44 0 1225 423732  
[secretary@bathandcountyclub.com](mailto:secretary@bathandcountyclub.com)

**The Clifton Club  
Bristol, England**  
[www.thecliftonclub.co.uk](http://www.thecliftonclub.co.uk)  
Tel: +44 0 117 974 5039  
[membership@thecliftonclub.co.uk](mailto:membership@thecliftonclub.co.uk)

**The Norfolk Club  
Norwich, England**  
[www.thenorfolkclub.co.uk](http://www.thenorfolkclub.co.uk)  
Tel: +44 0 1603 626767  
[generalmanager@thenorfolkclub.co.uk](mailto:generalmanager@thenorfolkclub.co.uk)

**Stephen's Green Club  
Dublin, Ireland**  
[www.stephensgreenclub.ie](http://www.stephensgreenclub.ie)  
Tel: +353 1 677 4744  
[info@stephensgreenclub.ie](mailto:info@stephensgreenclub.ie)

**Der Kieler Kaufmann  
Kiel, German**  
[www.der-kieler-kaufmann.de](http://www.der-kieler-kaufmann.de)  
Tel: +49 431 8889 6990  
[sekretariat@der-kieler-kaufmann.de](mailto:sekretariat@der-kieler-kaufmann.de)

**Malta Union Club  
Sliema, Malta**  
[www.maltaunionclub.com](http://www.maltaunionclub.com)  
Tel: +356 2133 2011  
[info@maltaunionclub.com](mailto:info@maltaunionclub.com)

**Ulster Reform Club  
Ulster, Northern Ireland**  
[www.ulsterreformclub.com](http://www.ulsterreformclub.com)  
Tel: +44 (0)2890 323 411

**Oporto Cricket  
and Lawn Tennis Club  
Oporto, Portugal**  
[www.oportocricketclub.com](http://www.oportocricketclub.com)  
Tel: +351 226 052 720  
[reception@oportocricketclub.com](mailto:reception@oportocricketclub.com)

**The Royal College  
of Surgeons  
Edinburgh, Scotland**  
[www.tenhillplace.com](http://www.tenhillplace.com)  
Tel: +44 (0) 131 662 2080  
[reservations@tenhillplace.com](mailto:reservations@tenhillplace.com)

**The Royal Northern  
& University Club  
Aberdeen, Scotland**  
[www.rnuc.org.uk](http://www.rnuc.org.uk)  
Tel: +44 0 1224 583 292  
[secretary@rnuc.org.uk](mailto:secretary@rnuc.org.uk)

**The Royal Scots Club  
Edinburgh, Scotland**  
[www.royalscotsclub.com](http://www.royalscotsclub.com)  
Tel: +44 0 131 556 4270  
[info@royalscotsclub.com](mailto:info@royalscotsclub.com)

**The Western Club  
Glasgow, Scotland**  
[www.westernclub.co.uk](http://www.westernclub.co.uk)  
Tel: +44 0 141 221 2016  
[secretary@westernclub.co.uk](mailto:secretary@westernclub.co.uk)

**Circulo Ecuestre  
Barcelona, Spain**  
[www.circuloecuestre.es](http://www.circuloecuestre.es)  
Tel: +34 93 415 6000  
[club@circuloecuestre.es](mailto:club@circuloecuestre.es)

**Club Financiero Genova  
Madrid, Spain**  
[www.clubfinancierogenova.com](http://www.clubfinancierogenova.com)  
Tel: +34 91 310 4900  
[info@clubfinancierogenova.com](mailto:info@clubfinancierogenova.com)

**Karolinska Institutet  
Stockholm, Sweden**  
[www.ki.se](http://www.ki.se)  
Tel: +46 852 480 000  
[registrator@ki.se](mailto:registrator@ki.se)



## Asia

**Hong Kong Academy  
of Medicine  
Hong Kong**  
[www.hkam.org.hk](http://www.hkam.org.hk)  
Tel: +852 2871 8888  
[hkam@hkam.org.hk](mailto:hkam@hkam.org.hk)

**The Foreign  
Correspondents' Club  
Hong Kong**  
[www.fcchk.org](http://www.fcchk.org)  
Tel: +852 2521 1511  
[fcc@fcchk.org](mailto:fcc@fcchk.org)

**The Chittagong Club  
Chittagong, Bangladesh**  
[www.chittagongclubtd.com](http://www.chittagongclubtd.com)  
Tel: +91 (0) 880 3162 0832  
[chittagongclub@gmail.com](mailto:chittagongclub@gmail.com)

**Deccan Gymkhana  
Pune, India**  
[www.deccangymkhana.co.in](http://www.deccangymkhana.co.in)  
Tel: +91 256 63970  
[deccangymkhana@gmail.com](mailto:deccangymkhana@gmail.com)

**PYC Hindu Gymkhana  
Pune, India**  
[www.pycgymkhana.com](http://www.pycgymkhana.com)  
Tel: +91 20 2566 3006  
[info@pycgymkhana.com](mailto:info@pycgymkhana.com)

**Space Circle Club  
Kolkata, India**  
Tel: +91 332 529 6508

**The Circle Club  
Kolkata, India**  
[www.circleclubs.com](http://www.circleclubs.com)  
Tel: +91 332 573 8242  
[sppl@giacsl01.vsnl.net.in](mailto:sppl@giacsl01.vsnl.net.in)

**The Cricket Club of India  
Mumbai, India**  
[www.thecricketclubofindia.com](http://www.thecricketclubofindia.com)  
Tel: +91 226 785 3600  
[info@cciclub.in](mailto:info@cciclub.in)



**The HBN Country Club  
Punjab, India**  
[www.hbnglobal.com/club](http://www.hbnglobal.com/club)  
Tel: +011 25555302  
[club@hbnglobal.com](mailto:club@hbnglobal.com)

**The Spring Club  
Kolkata, India**  
[www.springclub.co.in](http://www.springclub.co.in)  
Tel: +91 332 251 7057  
[info@springclub.co.in](mailto:info@springclub.co.in)

**Tollygunge Club  
Kolkata, India**  
[www.tollygungeclub.org](http://www.tollygungeclub.org)  
Tel: +91 33 2417 6022  
[tollygungecl@dataone.in](mailto:tollygungecl@dataone.in)

**The Madras Club,  
Chennai, India**  
[www.madrasclub.org](http://www.madrasclub.org)  
Tel: +91-44-2432 0727  
[office@madrasclub.org](mailto:office@madrasclub.org)

**The Yeshwant Club,  
Indore, India**  
[www.yeshwantclub.in](http://www.yeshwantclub.in)  
Tel.: 2549522-23-24  
[yeshwantclub@gmail.com](mailto:yeshwantclub@gmail.com)

**Kobe Club  
Kobe, Japan**  
[www.kobeclub.org](http://www.kobeclub.org)  
Tel: +81 78 241 2588  
[kobeclub@office.email.ne.jp](mailto:kobeclub@office.email.ne.jp)

**The Manila Club  
Manila, Philippines**  
[www.manilaclub.org.ph](http://www.manilaclub.org.ph)  
Tel: +63 (0) 917 983 7112  
[mc@manilaclub.org.ph](mailto:mc@manilaclub.org.ph)

**The Raffles Club  
Singapore**  
[www.rafflestownclub.com.sg](http://www.rafflestownclub.com.sg)  
Tel: +65 632 32323  
[membership@rtc.com.sg](mailto:membership@rtc.com.sg)

**The Hill Club,  
Nuwara, Eliya, Sri Lanka**  
[www.hillclubsrilanka.lk](http://www.hillclubsrilanka.lk)  
Tel: +94 52 2222 653  
[hillclub@slnet.lk](mailto:hillclub@slnet.lk)

**The British Club  
Bangkok, Thailand**  
[www.britishclubbangkok.org](http://www.britishclubbangkok.org)  
Tel: +66 0 2234 0247  
[info@britishclubbangkok.org](mailto:info@britishclubbangkok.org)

## Australia and New Zealand

### **New Castle Club New Castle (NSW), Australia**

[www.newcastleclub.com.au](http://www.newcastleclub.com.au)  
Tel: +61 (0) 2492 91224  
[reception@newcastleclub.com.au](mailto:reception@newcastleclub.com.au)

### **Royal Automobile Sydney (NSW), Australia**

[www.raca.com.au](http://www.raca.com.au)  
Tel: +61 (0) 282 732300  
[reception@raca.com.au](mailto:reception@raca.com.au)

### **The Aetheneum Club Melbourne (VIC), Australia**

[www.atheneumclub.com.au](http://www.atheneumclub.com.au)  
Tel: +61 (0) 396 543200  
[conciierge@atheneumclub.com.au](mailto:conciierge@atheneumclub.com.au)

### **Australia National University Canberra (ACT), Australia**

[www.anu.edu.au](http://www.anu.edu.au)  
Tel: +61 (0) 261 255111  
[accommodation.unihouse@anu.edu.au](mailto:accommodation.unihouse@anu.edu.au)

### **United Service Club Brisbane (QLD), Australia**

[www.unitedserviceclub.com.au](http://www.unitedserviceclub.com.au)  
Tel: +61 (0) 738 314433  
[membership@unitedserviceclub.com.au](mailto:membership@unitedserviceclub.com.au)

### **University Of Melbourne Melbourne (VIC), Australia**

[www.unihouse.org.au](http://www.unihouse.org.au)  
Tel: +61 (0) 383 445254  
[reception@uniclub.com.au](mailto:reception@uniclub.com.au)

### **Canterbury Club Christchurch, New Zealand**

[www.canterburyclub.co.nz](http://www.canterburyclub.co.nz)  
Tel: +64 (0) 3365 0353  
[admin@canterburyclub.co.nz](mailto:admin@canterburyclub.co.nz)

### **Christchurch Club Christchurch, New Zealand**

[www.christchurchclub.co.nz](http://www.christchurchclub.co.nz)  
Tel: +64 3366 9461  
[reception@christchurchclub.co.nz](mailto:reception@christchurchclub.co.nz)

### **The Wellington Club Wellington, New Zealand**

[www.wellingtonclub.co.nz](http://www.wellingtonclub.co.nz)  
Tel: +64 447 20348  
[info@wellingtonclub.co.nz](mailto:info@wellingtonclub.co.nz)

### **The Northern Club Auckland, New Zealand**

[www.northernclub.co.nz](http://www.northernclub.co.nz)  
Tel: +64 9379 4755  
[manager@northernclub.co.nz](mailto:manager@northernclub.co.nz)

## Africa

### **Mombasa Club Mombasa, Kenya**

[www.mombasaclub.net](http://www.mombasaclub.net)  
Tel: +254 41 2222061  
[admin@mombasaclub.net](mailto:admin@mombasaclub.net)

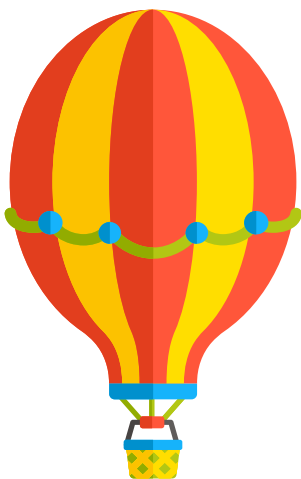
### **Kelvin Grove Club Cape Town, South Africa**

[www.kelvingrove.co.za](http://www.kelvingrove.co.za)  
Tel: +27 (0) 21 658 4500  
[membership@kelvingrove.co.za](mailto:membership@kelvingrove.co.za)

Access available via temporary membership for R600.00 for one month

### **Rand Club Johannesburg, South Africa**

[www.randclub.co.za](http://www.randclub.co.za)  
Tel: +27 (0) 11 870 4260  
[info@randclub.co.za](mailto:info@randclub.co.za)



## To visit a club you will need a letter of introduction from the Royal Society of Medicine:

- [www.rsm.ac.uk/my-membership/reciprocal-clubs-members/letter-of-introduction-for-reciprocal-club/](http://www.rsm.ac.uk/my-membership/reciprocal-clubs-members/letter-of-introduction-for-reciprocal-club/)
- Email: [membership@rsm.ac.uk](mailto:membership@rsm.ac.uk)
- Tel: +44 (0)20 7290 2991

Once you have your letter then all you need to do is make contact with the club directly to arrange accommodation. If you're just visiting for the day then take your RSM membership card and letter of introduction along.

We continue to add new clubs so please visit [www.rsm.ac.uk](http://www.rsm.ac.uk) for the latest information

## Association of College and University Clubs (ACUC)

The Royal Society of Medicine is also a member of ACUC which provides RSM members with access to over 100 campus clubs worldwide including the USA, Canada, Europe and Australia.

Universities which are part of the ACUC include:

- University of Chicago
- Columbia University Faculty Club
- Harvard University
- University of California at Los Angeles
- Stanford University
- Princeton University

To view clubs available visit: [www.acuclubs.org](http://www.acuclubs.org)

To request a letter to gain access to ACUC clubs:

- [www.rsm.ac.uk/my-membership/reciprocal-clubs-members/letter-of-introduction-for-reciprocal-club/](http://www.rsm.ac.uk/my-membership/reciprocal-clubs-members/letter-of-introduction-for-reciprocal-club/)
- Email: [membership@rsm.ac.uk](mailto:membership@rsm.ac.uk)
- Tel: +44 (0)20 7290 2991

## As well as the reciprocal club arrangements, RSM Members can also enjoy many benefits associated with travelling including:

- Discounted travel insurance with Hiscox
- Free membership of WEXAS Travel
- Discounts on specialist holidays with Jon Baines Tours
- Discounts on airport parking, airport lounges and airport hotels
- Business level rates of foreign exchange with FairFX



**For more information about any of the reciprocal clubs or other travel benefits please contact our Membership Department or visit our website:**

**T:** +44 (0)20 7290 2991

**E:** [membership@rsm.ac.uk](mailto:membership@rsm.ac.uk)

**[www.rsm.ac.uk](http://www.rsm.ac.uk)**