
Royal Society of Medicine Library

1 – The essentials

Library Opening Hours	Monday - Thursday	9.00am - 7.00pm
	Friday	9.00am - 5.30pm
	Saturday	10.00am - 4.30pm
Study Centre Hours	Monday - Thursday	7.00pm - 11.00pm
(non-staffed)	Friday	5.30pm - 11.00pm
	Saturday	4.30pm - 11.00pm
	Sunday	10.00am - 11.00pm

Resources

- 1,300 current journal titles
- current clinical and experimental research material and a large historical collection including an extensive collection of portraits of prominent historical medical figures
- Over 850 e-journals
- Access to five online medical databases

Services

Document Delivery - Articles posted to you or sent direct to your desktop.

Loans - Borrow items in person or have them sent to you anywhere in the EU. We can also borrow books from other libraries for you.

Enquiry service - Your reference questions answered within 24 hours.

Literature searching - High quality searches carried out by highly trained staff.

Electronic Monthly Updates (EMUs) - Current awareness service designed to meet your research needs.

Item retrieval - Books and journals can be retrieved in advance of your visit.

Training - Database tutorials and Information Skills Training are free to members.

Extras

- Wi-Fi access and internet connections for laptops
- Access to 26 PCs
- Bookable carrels for private study
- Bookable IT training room, Heritage Centre and Library board room.

For more information or to search the online catalogue please see our website: <http://www.rsm.ac.uk/library>

Contact us

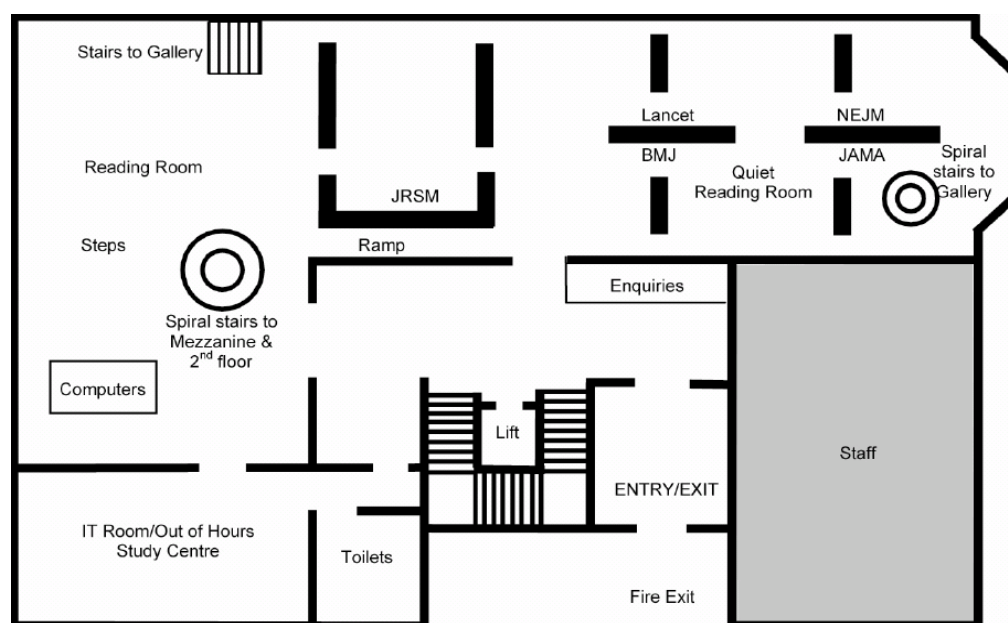
Tel.	+44 (0) 20 7290 2940 / 2941
Email	library@rsm.ac.uk

2 – Self guided tour

The Library has a Basement and First, Mezzanine/Gallery and Second floor. All can be accessed via the lift or various staircases. There are study desks with Internet Access Points and PCs on all floors. We also have Wi-Fi.

First floor

The First floor houses the majority of our current books as well as the Study Centre and a Reading Room for silent study. Issues of the Lancet, BMJ, JAMA and NEJM from 1970 onwards are located in the centre aisle of the Reading Room which also contains the Medical Register, Medical Directory and statistical publications.



IT Room/Out of Hours Study Centre

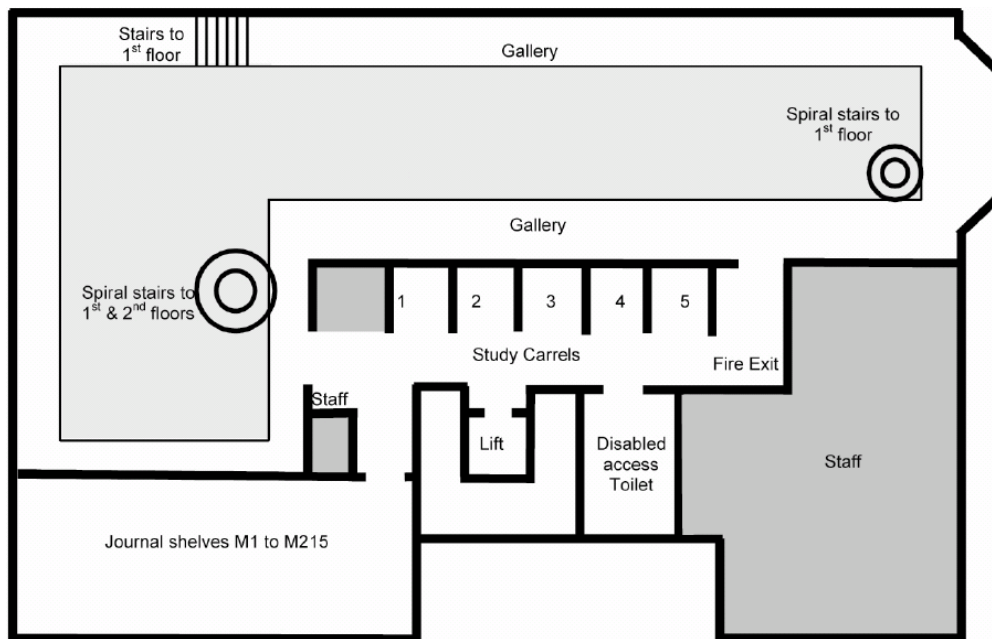
When courses are not running, this room is available for general use. After closing time it becomes the Study Centre. To use the Study Centre you need to swap your membership card, or another form of ID, for an access card at the Issue / Enquiry Desk.

All computers in the Library provide access to the internet, databases and e-journals.

Mezzanine / Gallery Floor

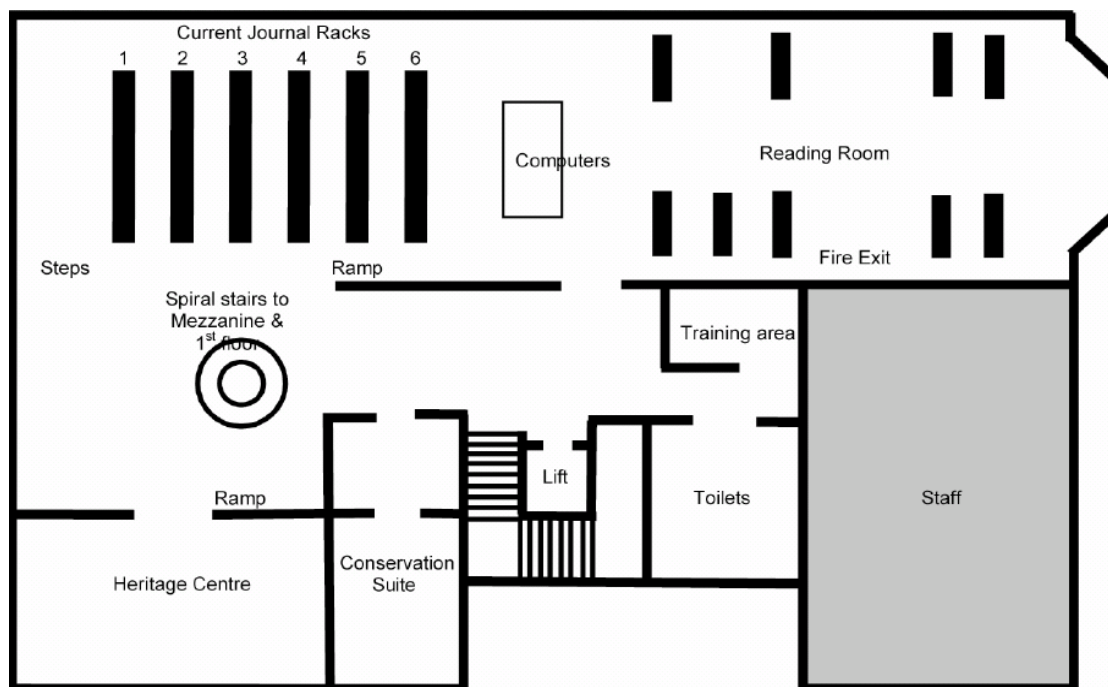
The Gallery runs all the way around the First Floor Reading Room and contains all journals marked Gallery on the catalogue.

The Mezzanine has study rooms which can be booked, at the customer services desk, for private study (without charge). These rooms have Internet Access Points for your laptop. We also have an accessible PC for those with visual impairments and other disabilities. All journals marked Mezzanine are on this floor.



Second floor

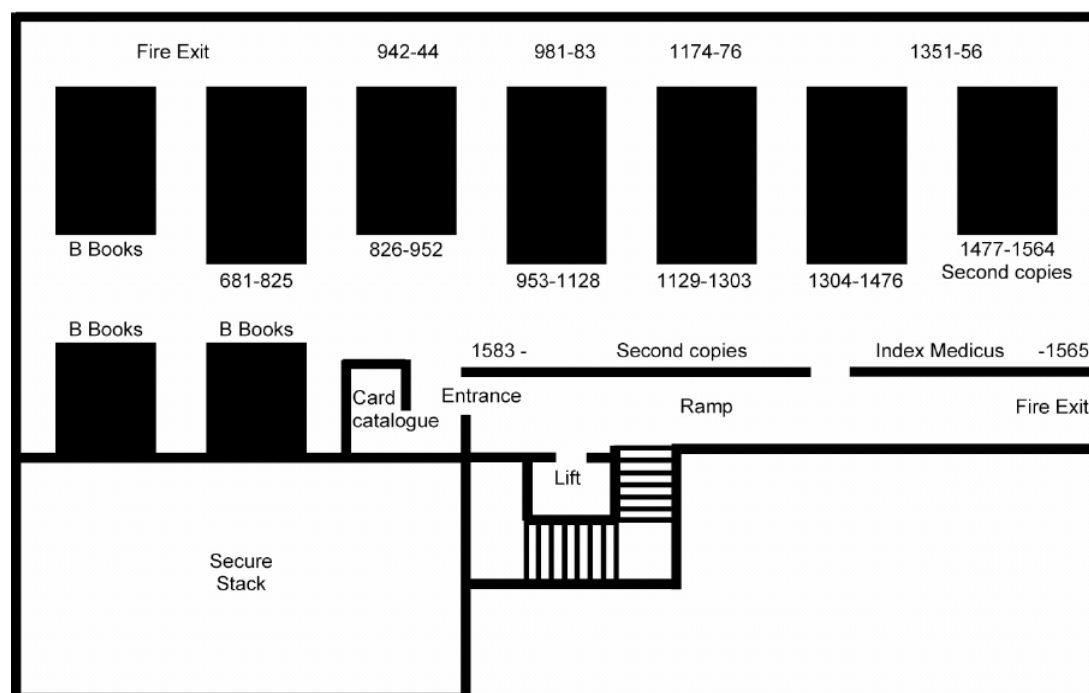
The free standing shelves at the top left of the plan contain current journal stock, arranged in subject order. The rest of the floor holds back issues of journals. The Library Heritage Centre contains some of our rarer material. In front of it is an exhibition space with a changing selection of displays.



Basement

The basement contains the card catalogue, older books, earlier editions and less frequently accessed journals (including closed runs, low use titles, old volumes and some foreign language journal titles).

There is a card catalogue for items acquired prior to 1994, in an alphabetical sequence of authors and subjects. Printed guides are available.



3 – Self service photocopiers/printers

Photocopying and printing facilities are available on all floors. The copiers accept photocopy cards or cash, although you need a card for printing. These can be bought from a dispenser on the first floor and can be charged up with credit in the copiers. Cards cost £1.00 and contain 50p credit. A4 copies cost 10p per sheet (20p for A3). Colour copies are also available.

4 – Further help is available

Personal inductions are available to all new members. These are tailored specifically to meet the subject interests of the member, including an overview of the services provided by the Library and the stock held.

Guided Library tours are available to individual members or groups.