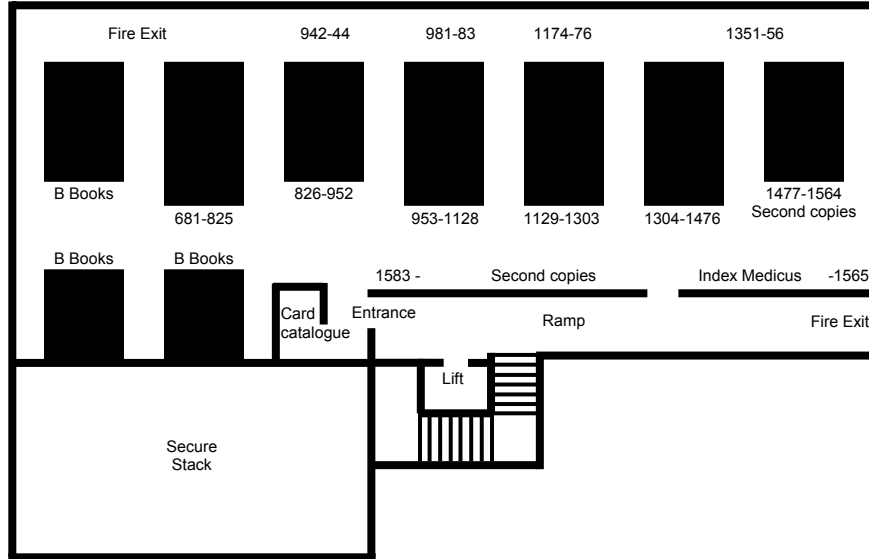


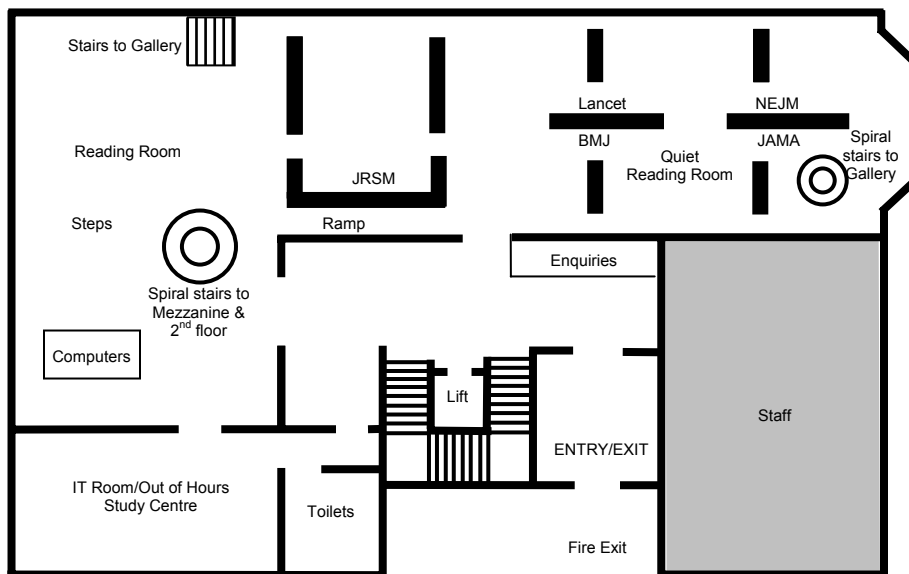
Royal Society of Medicine Library Floor Plans

Basement



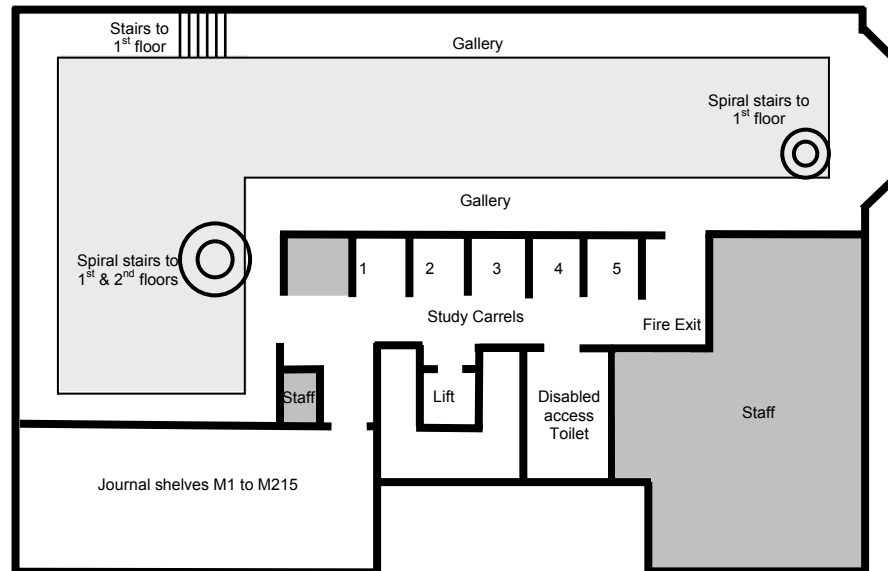
*Large sequences of journals, tracts and books
Please check catalogue for exact title holdings as some titles may not be with others of their subject*

1st Floor



Current books

Mezzanine and Gallery level



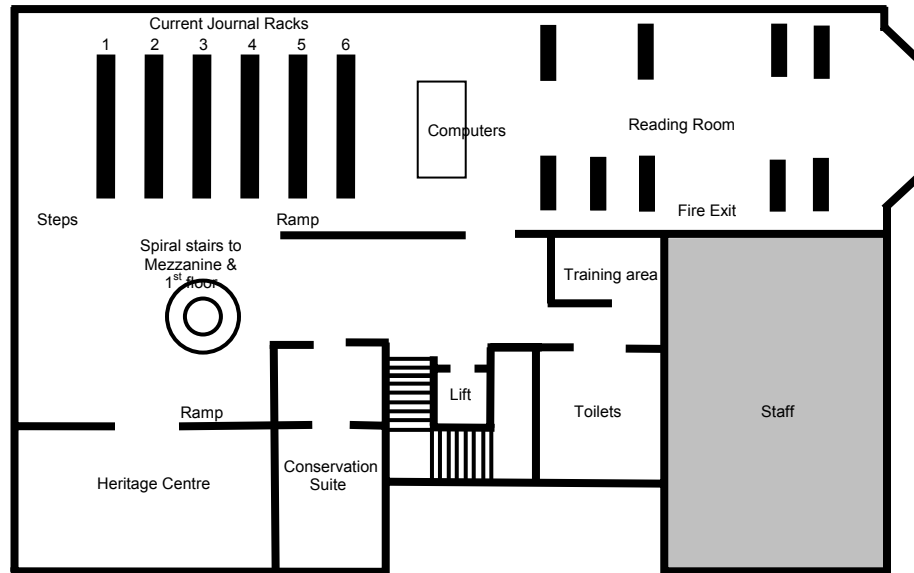
Journal subjects on the Gallery:

- Geriatrics
- Psychiatry
- Paediatrics (also on Mezzanine)
- Heart and Lung
- Physiology
- Laboratory Medicine
- Dermatology
- General Science (see also Mezzanine)

Journal subjects in Mezzanine journals room:

- History of Medicine
- General Medicine
- Veterinary Medicine
- Public Health
- Epidemiology
- Physical and Sports Medicine
- Neurology
- Psychology
- Heart and Lung
- Anatomy, Biology and General Science (see also Gallery)
- Immunology and Microbiology
- Pathology
- Paediatrics (also on Gallery)
- Pharmacology
- Gastroenterology and Nutrition
- Endocrinology and Metabolism
- Biochemistry
- Physiology
- Tropical Medicine
- Rheumatology
- Genetics

2nd Floor



Current year Journal Rack subjects:

1. History of Medicine/General Medicine (Palliative Care and Hypnosis)/Veterinary Medicine/A & E Medicine
2. Public Health and Epidemiology/Orthopaedics/Physical and Sports Medicine/Neurology/Psychiatry/Psychology
3. Heart and Lung/Anatomy, Biology and General Science/Surgery/Immunology and Microbiology
4. Radiology/Cancer/Pathology/Paediatrics/Geriatrics/Pharmacology
5. Urology/Gastroenterology and Nutrition/Endocrinology and Metabolism/Obstetrics and Gynaecology/Anaesthesia and Critical Care Medicine/Physiology and Biochemistry
6. Ear, Nose and Throat/Tropical Medicine/Dermatology/Oral Medicine and Dentistry/Rheumatology/Genetics/Ophthalmology/Forensic and Medico-Legal

Journal subjects on 2nd floor shelves:

- Surgery
- Orthopaedics
- Urology
- Cancer
- Palliative Care
- Radiology
- Oral Medicine and Dentistry
- Forensic and Medico-Legal
- Obstetrics and Gynaecology
- Ophthalmology
- Anaesthesia and Critical Care
- Ear, Nose and Throat
- A & E Medicine

	Library Opening Hours	Study Centre Opening Hours
Mondays - Thursdays	9.00am to 7.00pm	7.00pm to 11.00pm
Fridays	9.00am to 5.30pm	5.30pm to 11.00pm
Saturdays	10.00am to 4.30pm	4.30pm to 7.00pm
Sundays	Closed	10.00am to 7.00pm

To use the Study Centre you will need to arrive before 11pm weekdays, or 7pm weekends, to collect an access card. The Library and Study Centre are closed during Bank Holidays.

More information about the opening hours can be found at www.rsm.ac.uk

After the Library is closed access cards can be collected from the Domus Reception desk located at the Members entrance on the ground floor of the building available at the times above, access cards are exchanged for your membership card or other official identification.

The Study Centre consists of the Library entrance area, IT resources room, with photocopier, printer and computing facilities. This area is only available for Fellows and Members of the Society.

There are computers located throughout the Library, in addition there are Internet connection points for laptops on the first, mezzanine and second floors.

Current books on the first floor are arranged according to the National Library of Medicine Classification scheme. Schedules for the arrangement of the books can be found on the first and second floors or please consult the Library catalogue.

Older books are located in the basement and use different classification schemes; most of these are arranged according to Universal Decimal Classification.

Journals on each floor are arranged according to subject and are split across floors for space reasons. Please consult the catalogue for precise locations for journals or ask Library staff for assistance.

The Library catalogue can be located online at <http://www.rsm.ac.uk/librar/index.php>

Self-guided Library tour leaflets are available for collection at the Library customer service desk on the first floor.

Personalised tours to show you the highlights or areas of specific interest can be arranged in advance by contacting Library@rsm.ac.uk or telephone 020 7290 2940.